

# RELIABILITY™

## Provin

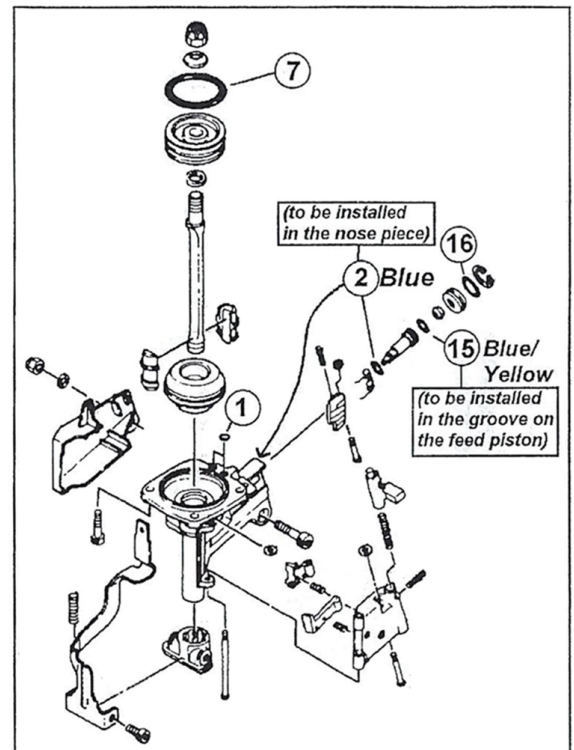
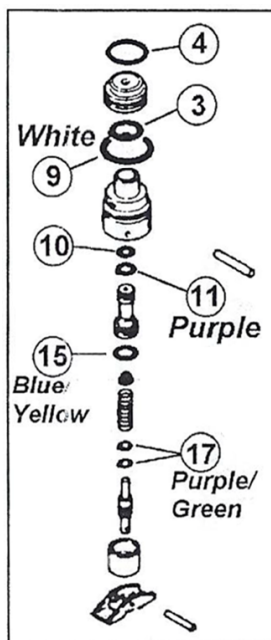
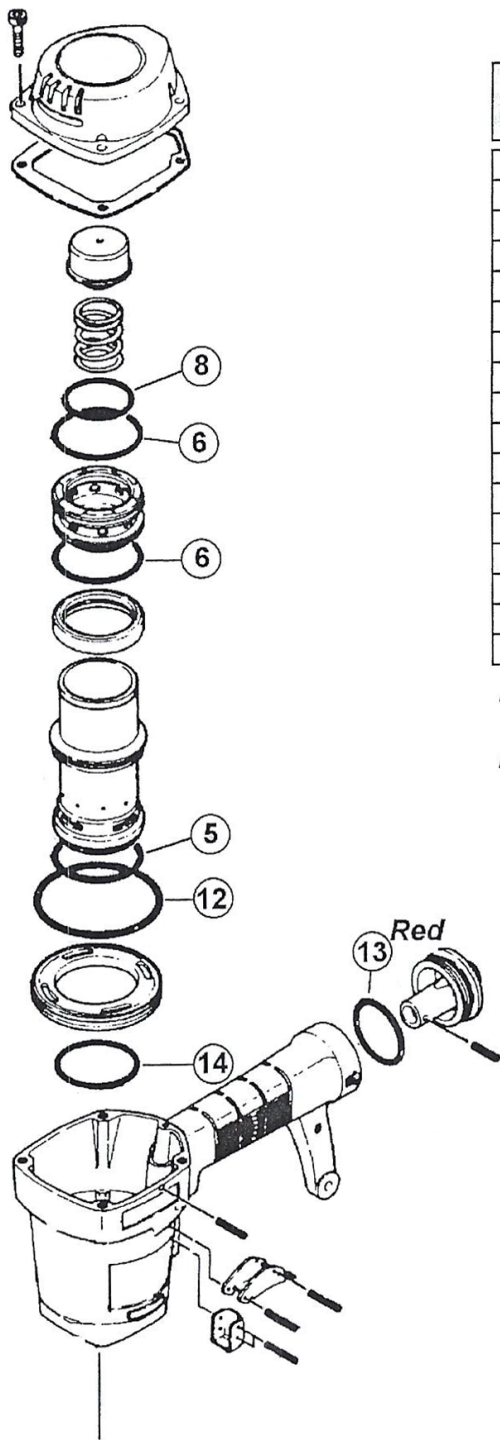
### Contents of O-Ring Kit KT-BO-912

Key Number	Quantity	Performance Provin, Inc.		
		Part Number	Color Code	
1	2	OR-PP-138		
2	1	OR-PP-148A	Blue	Note 2
3	1	OR-PP-150		
4	1	OR-PP-156		
5	1	OR-PP-396		
6	2	OR-PP-398		
7	1	OR-PP-568		
8	1	OR-PP-570		
9	1	OR-PP-854	White	
10	1	OR-PP-889		
11	1	OR-PP-1316	Purple	
12	1	OR-PP-927		
13	1	OR-PP-376	Red	
14	1	OR-PP-931		
15	2	OR-PP-929	Blue/Yellow	Note 3
16	1	OR-PP-350		
17	2	OR-PP-6293	Purple/Green	

Equivalent Bostitch® Part Number
MRG003617 / HH11160
RG036407 / HH11165
851284
86459
850006
850007
N5524 / MRG037735 / 850607
MRG039735 / HH11109
MRG019824 / HH11138
MRG005819,(-1) / HH11119
MRG006819,(-1) / HH11209
MRG074431 / HH12106
MRG034826 / HH19167
MRG049020 / HH19191
MRG008819-1 / HH11113
MRG013926 / HH11166
MRG002514 / HH11901

**Note 2:** O-Ring key number 2 ( color code blue ) is to be installed in the nose piece.

**Note 3:** Quantity one of O-Ring key number 15 ( color code blue/yellow ) to be installed in the groove on the feed piston.



\*Generously grease all O-rings at time of assembly

Note: Read and understand the safety information printed on the reverse side before repairing any tools.  
 Nota: Lea y comprende la información de seguridad impresa al reverso antes de reparar cualquier herramienta.

6/8/05

Exploded View and O-ring List for  
BOSTITCH N12

VL-BO-28

**CAUTION****CAUTION****CAUTION**

ALWAYS WEAR SAFETY GLASSES WITH SIDE SHIELDS WHEN USING PNEUMATICALLY OPERATED FASTENER DRIVING TOOLS

NEVER POINT THE TOOL AT YOURSELF OR ANYONE ELSE

NEVER BYPASS OR REMOVE ANY SAFETY DEVICE

ALWAYS FOLLOW THE ORIGINAL MANUFACTURE'S SAFETY AND SERVICE INSTRUCTION

NEVER ATTEMPT TO SERVICE OR REPAIR A PNEUMATICALLY OPERATED TOOL WITH THE COMPRESSES AIR LINE CONNECTED TO THE TOOL

NEVER LEAVE A PNEUMATICALLY OPERATED TOOL UNATTENDED WITH THE COMPRESSES AIR LINE CONNECTED

ALWAYS FOLLOW THE ORIGINAL TOOLS MANUFACTURE'S DISASSEMBLY, ASSEMBLY, AND TOOL INSPECTION PROCEDURES

**PRECAUTION****PRECAUTION****PRECAUTION**

SIEMPRE USE LENTES DE SEGURIDAD CON PROTECTORES LATERALES AL USAR HERRAMIENTAS DE IMPULSO CON SUJETADOR DE OPERACIÓN NEUMÁTICA

NUNCA APUNTE A SI MISMO O A OTRA PERSONA CON LA HERRAMIENTA

NUNCA EVITE O RETIRE ALGÚN DISPOSITIVO DE SEGURIDAD

SIEMPRE SIGA LAS INSTRUCCIONES DE SEGURIDAD Y SERVICIO DEL FABRICANTE ORIGINAL DE LA HERRAMIENTA

NUNCA INTENTE HACER MANTENIMIENTO O REPARAR UNA HERRAMIENTA DE OPERACIÓN NEUMÁTICA CON LA LINEA DE AIRE COMPRIMIDO CONECTADA A LA HERRAMIENTA

NUNCA DEJE SIN ATENCION UNA HERRAMIENTA DE OPERACIÓN NEUMÁTICA CON LA LINEA DE AIRE COMPRIMIDO CONECTADA

SIEMPRE SIGE LOS PROCEDIMIENTOS DE DESMONTAJE, MONTAJE, E INSPECCIÓN DEL FABRICANTE ORIGINAL DE LA HERRAMIENTA

## O-Ring Kit KT-BO-912

For use on the following tool models.  
Kit contains all O-Rings in these tools.

BOSTITCH	N12
	N12-40
	N12B
	N12B-1
	N12B-1ST

