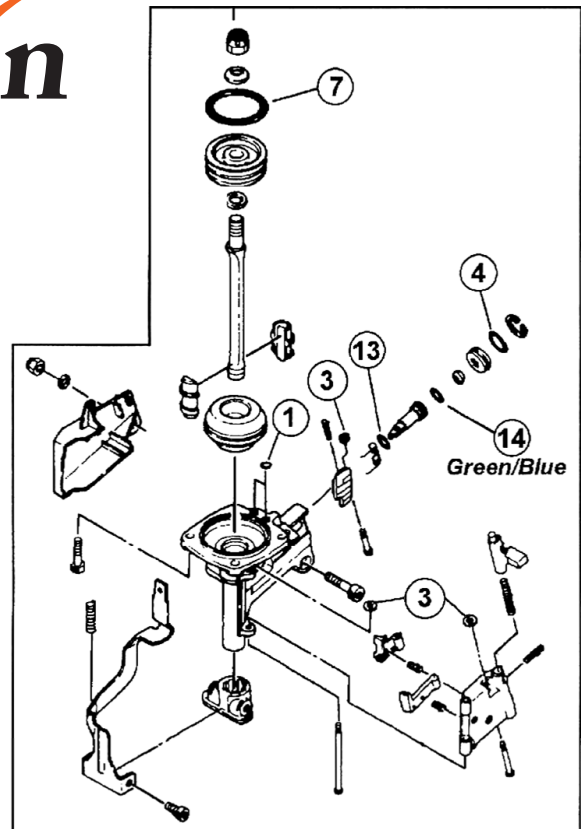
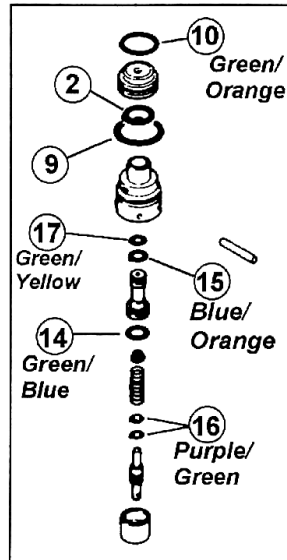
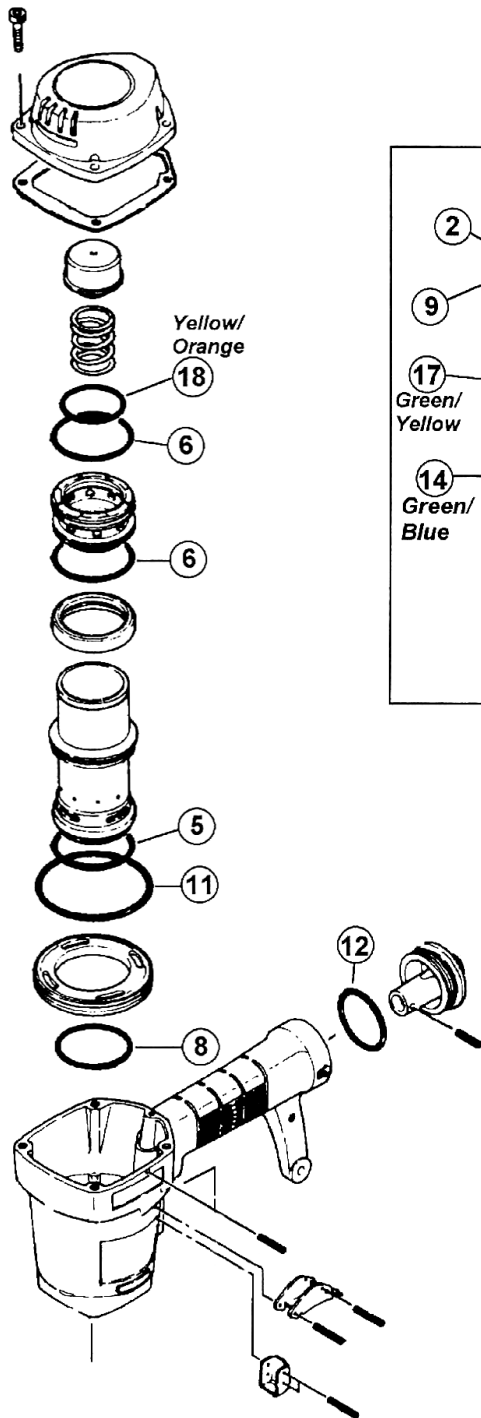


# RELIABILITY™

## Provin



### Contents of O-Ring Kit KT-SU-168

Key Number	Quantity	Performance Provin, Inc.		Equivalent Supco® Part Number
		Part Number	Color Code	
1	2	OR-PP-138		R053
2	1	OR-PP-150		R021
3	3	OR-PP-332S		R056
4	1	OR-PP-350		R058
5	1	OR-PP-396		R012
6	2	OR-PP-398		R008
7	1	OR-PP-568		R040
8	1	OR-PP-815		R015
9	1	OR-PP-844		R022
10	1	OR-PP-846	Green / Orange	R019
11	1	OR-PP-927		R013
12	1	OR-PP-930		R017
13	1	OR-PP-954		R062
14	2	OR-PP-971	Green / Blue	R027
15	1	OR-PP-1027	Blue / Orange	R025
16	2	OR-PP-6293	Purple / Green	R029
17	1	OR-PP-1106	Green / Yellow	R024
18	1	OR-PP-1130	Yellow/ Orange	R007

\*Generously grease all O-rings at time of assembly

Note: Read and understand the safety information printed on the reverse side before repairing any tools.  
 Nota: Lea y comprende la información de seguridad impresa al reverso antes de reparar cualquier herramienta.

6/30/2005

Exploded View and O-ring List for  
SUPCO SR-168

VL-SU-12

**CAUTION****CAUTION****CAUTION**

ALWAYS WEAR SAFETY GLASSES WITH SIDE SHIELDS WHEN USING PNEUMATICALLY OPERATED FASTENER DRIVING TOOLS

NEVER POINT THE TOOL AT YOURSELF OR ANYONE ELSE

NEVER BYPASS OR REMOVE ANY SAFETY DEVICE

ALWAYS FOLLOW THE ORIGINAL MANUFACTURE'S SAFETY AND SERVICE INSTRUCTION

NEVER ATTEMPT TO SERVICE OR REPAIR A PNEUMATICALLY OPERATED TOOL WITH THE COMPRESSES AIR LINE CONNECTED TO THE TOOL

NEVER LEAVE A PNEUMATICALLY OPERATED TOOL UNATTENDED WITH THE COMPRESSES AIR LINE CONNECTED

ALWAYS FOLLOW THE ORIGINAL TOOLS MANUFACTURE'S DISASSEMBLY, ASSEMBLY, AND TOOL INSPECTION PROCEDURES

**PRECAUTION****PRECAUTION****PRECAUTION**

SIEMPRE USE LENTES DE SEGURIDAD CON PROTECTORES LATERALES AL USAR HERRAMIENTAS DE IMPULSO CON SUJETADOR DE OPERACIÓN NEUMÁTICA

NUNCA APUNTE A SI MISMO O A OTRA PERSONA CON LA HERRAMIENTA

NUNCA EVITE O RETIRE ALGÚN DISPOSITIVO DE SEGURIDAD

SIEMPRE SIGA LAS INSTRUCCIONES DE SEGURIDAD Y SERVICIO DEL FABRICANTE ORIGINAL DE LA HERRAMIENTA

NUNCA INTENTE HACER MANTENIMIENTO O REPARAR UNA HERRAMIENTA DE OPERACIÓN NEUMÁTICA CON LA LINEA DE AIRE COMPRIMIDO CONECTADA A LA HERRAMIENTA

NUNCA DEJE SIN ATENCIÓN UNA HERRAMIENTA DE OPERACIÓN NEUMÁTICA CON LA LINEA DE AIRE COMPRIMIDO CONECTADA

SIEMPRE SIGA LOS PROCEDIMIENTOS DE DESMONTAJE, MONTAJE, E INSPECCIÓN DEL FABRICANTE ORIGINAL DE LA HERRAMIENTA

## O-Ring Kit

# KT-SU-168

For use on the following tool models.  
Kit contains all O-Rings in these tools.

SUPCO

SR-168

